



Noise Monitoring Result

Day Time (0700 - 1900hrs on normal weekdays)

Location: M1a - Harbour Road Sports Centre

Date	Time	Weather	Measurement Noise Level			Baseline Level	Construction Noise Level	Limit Level
			Leq	L10	L90	Leq	Leq	Leq
Unit: dB(A), (30-min)								
31/3/2014	14:40	Cloudy	72.0	74.5	67.5	72	72	75
7/4/2014	13:40	Cloudy	71.2	74.0	65.5	72	71	75
14/4/2014	13:40	Cloudy	71.2	73.5	66.0	72	71	75
23/4/2014	17:00	Cloudy	74.0	76.0	70.0	72	69	75

Location: M2b - Noon-day gun area

Date	Time	Weather	Measurement Noise Level			Baseline Level	Construction Noise Level	Limit Level
			Leq	L10	L90	Leq	Leq	Leq
Unit: dB(A), (30-min)								
31/3/2014	15:28	Cloudy	69.0	70.5	67.0	68	63	75
7/4/2014	16:05	Cloudy	67.9	69.5	66.0	68	56	75
14/4/2014	14:25	Cloudy	67.8	69.0	65.5	68	54	75
24/4/2014	8:58	Cloudy	71.2	74.0	66.5	68	69	75

Location: M3a - Tung Lo Wan Fire Station

Date	Time	Weather	Measurement Noise Level			Baseline Level	Construction Noise Level	Limit Level
			Leq	L10	L90	Leq	Leq	Leq
Unit: dB(A), (30-min)								
31/3/2014	16:13	Cloudy	68.3	70.5	65.5	69	68	75
7/4/2014	16:50	Cloudy	67.4	69.0	65.0	69	67	75
14/4/2014	15:10	Cloudy	67.4	68.5	65.5	69	67	75
24/4/2014	9:41	Cloudy	66.1	67.5	64.0	69	66	75

Location: M4b - Victoria Centre

Date	Time	Weather	Measurement Noise Level			Baseline Noise Level	Construction Noise Level	Limit Level
			Leq	L10	L90	Leq	Leq	Leq
Unit: dB(A), (30min)								
31/3/2014	16:56	Cloudy	68.9	70.5	67.0	67	64	75
7/4/2014	17:25	Cloudy	67.6	69.0	65.5	67	56	75
14/4/2014	16:00	Cloudy	68.1	70.0	65.5	67	60	75
24/4/2014	10:23	Cloudy	70.5	72.5	67.0	67	68	75

Location: M5b - City Garden

Date	Time	Weather	Measurement Noise Level			Baseline Level	Construction Noise Level	Limit Level
			Leq	L10	L90	Leq	Leq	Leq
Unit: dB(A), (30min)								
2/4/2014	15:50	Cloudy	69.3	69.5	66.5	68	63	75
8/4/2014	11:10	Cloudy	69.9	70.0	65.5	68	65	75
14/4/2014	16:50	Cloudy	72.0	77.6	69.5	68	70	75
24/4/2014	14:03	Cloudy	69.8	70.5	68.5	68	65	75

Location: M6 - HK Baptist Church Henrietta Secondary School

Date	Time	Weather	Measurement Noise Level			Baseline Level	Construction Noise Level	Limit Level
			Leq	L10	L90	Leq	Leq	Leq
Unit: dB(A), (30-min)								
2/4/2014	10:30	Cloudy	74.8	75.1	72.0	71	73	70
8/4/2014	9:50	Cloudy	75.4	75.5	73.0	71	74	65
15/4/2014	9:10	Fine	74.7	75.5	72.5	71	72	70
24/4/2014	14:52	Cloudy	73.5	74.5	71.5	71	70	70



Noise Monitoring Result

Day Time (0700 - 1900hrs on normal weekdays)

Location: M7e - International Finance Centre (Eastern End of Podium) (Reference Station)

Date	Time	Weather	Measurement Noise Level			Baseline Level	Construction Noise Level	Limit Level
			Leq	L10	L90	Leq	Leq	Leq
Unit: dB(A), (30-min)								
1/4/2014	10:15	Cloudy	68.1	70.0	65.0	67	62	N/A
7/4/2014	11:14	Cloudy	66.1	68.0	63.0	67	66	N/A
14/4/2014	10:05	Fine	68.2	70.0	65.5	67	63	N/A
23/4/2014	14:45	Cloudy	67.0	69.0	63.0	67	54	N/A

Location: M7w - International Finance Centre (Western End of Podium)

Date	Time	Weather	Measurement Noise Level			Baseline Level	Construction Noise Level	Limit Level
			Leq	L10	L90	Leq	Leq	Leq
Unit: dB(A), (30-min)								
1/4/2014	10:51	Cloudy	65.7	67.5	63.0	69	66	75
7/4/2014	10:37	Cloudy	65.3	67.0	62.5	69	65	75
14/4/2014	10:50	Fine	65.3	66.5	62.5	69	65	75
23/4/2014	15:20	Cloudy	66.4	68.0	62.0	69	66	75

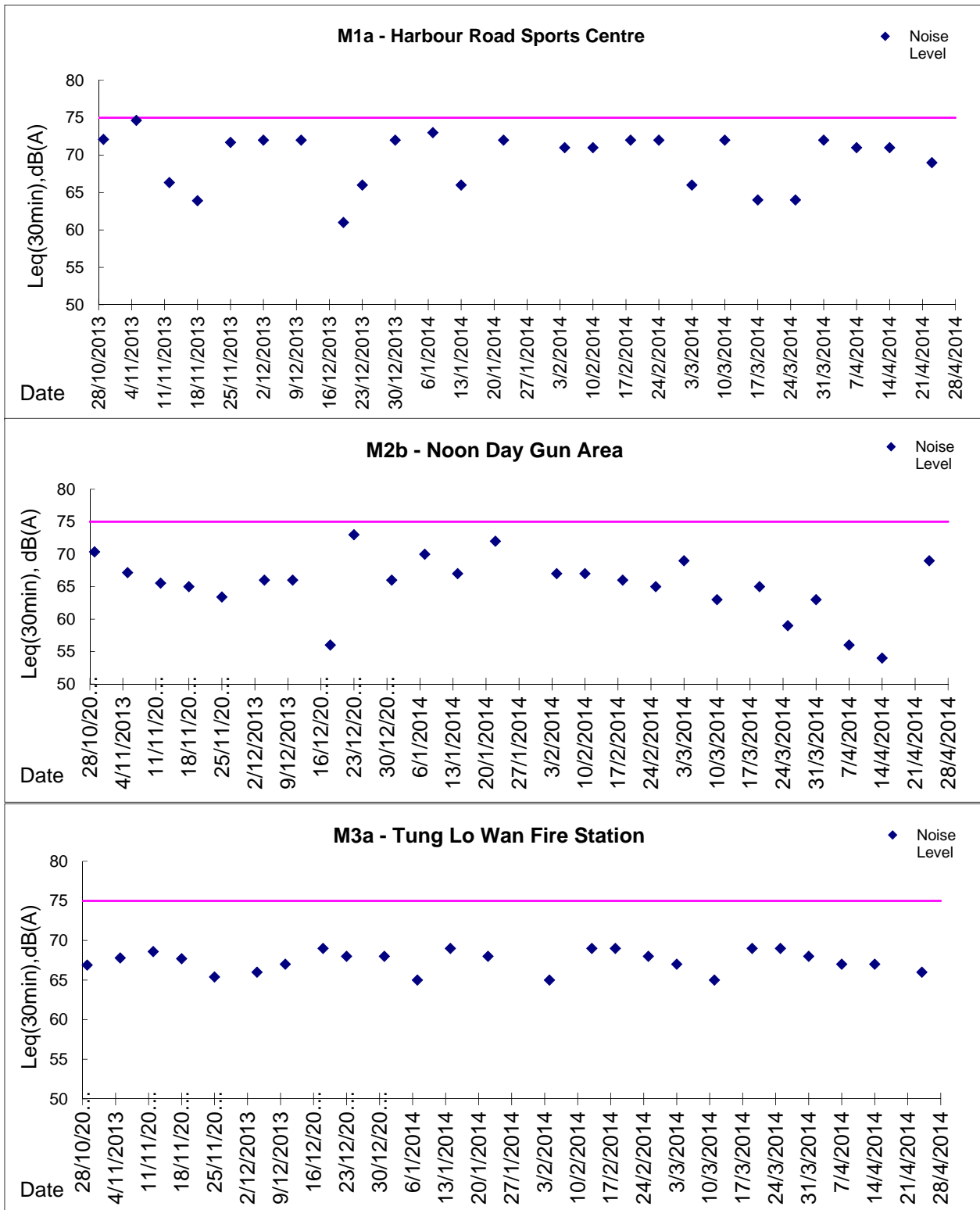
Location: M8 - City Hall

Date	Time	Weather	Measurement Noise Level			Baseline Level	Construction Noise Level	Limit Level
			Leq	L10	L90	Leq	Leq	Leq
Unit: dB(A), (30-min)								
31/3/2014	13:19	Cloudy	63.5	64.7	57.5	64	64	70
8/4/2014	15:15	Cloudy	63.0	65.0	58.5	64	63	70
14/4/2014	9:18	Fine	60.8	63.0	58.0	64	61	70
23/4/2014	16:15	Cloudy	60.5	63.0	56.0	64	61	70



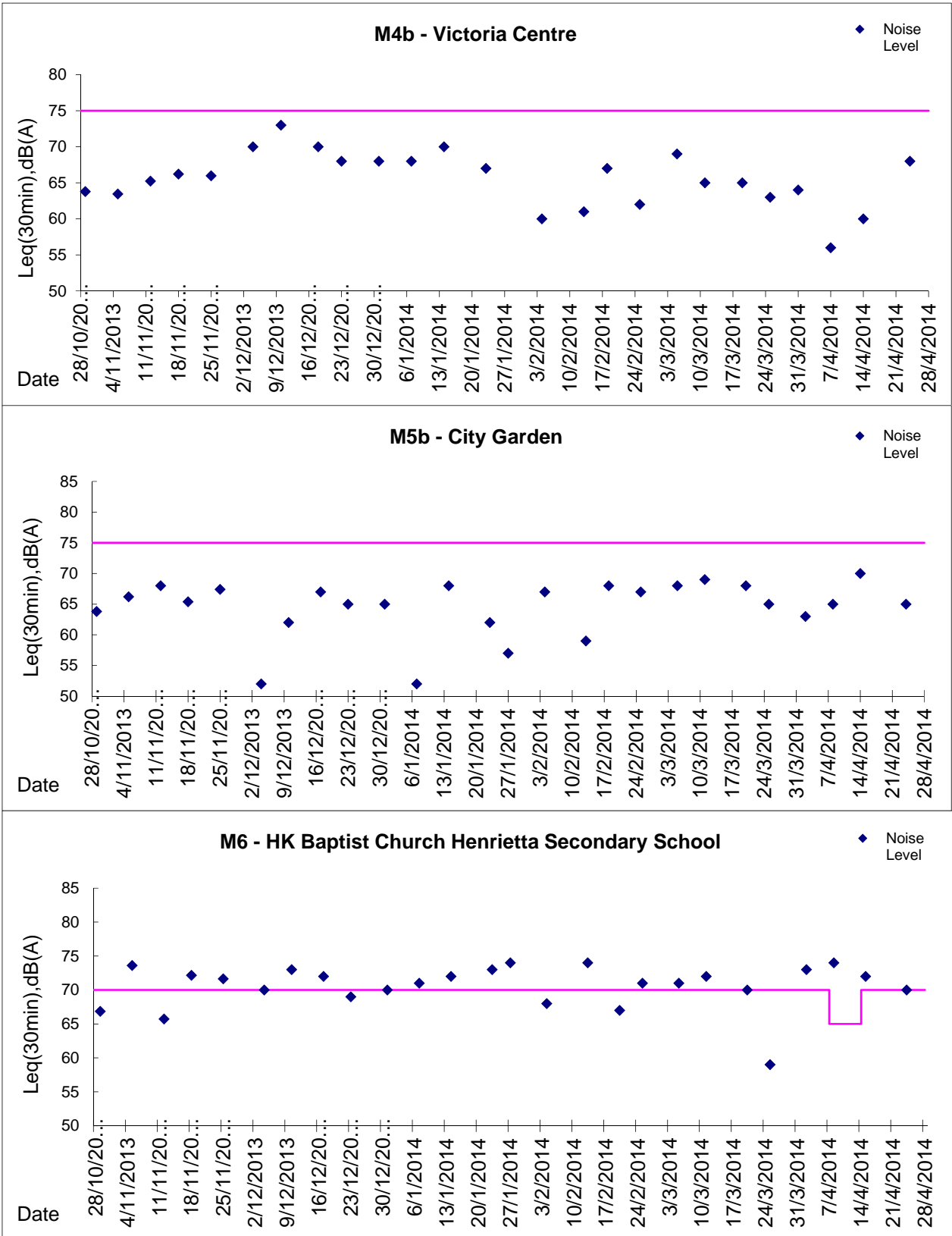
Graphic Presentation of Noise Monitoring Result

Day Time (0700 - 1900hrs on normal weekdays)





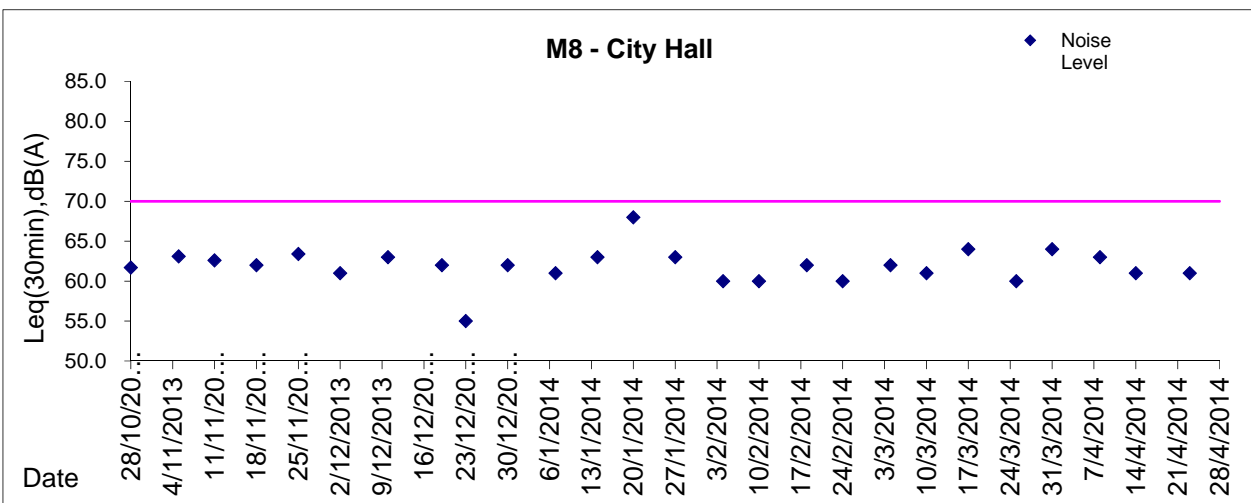
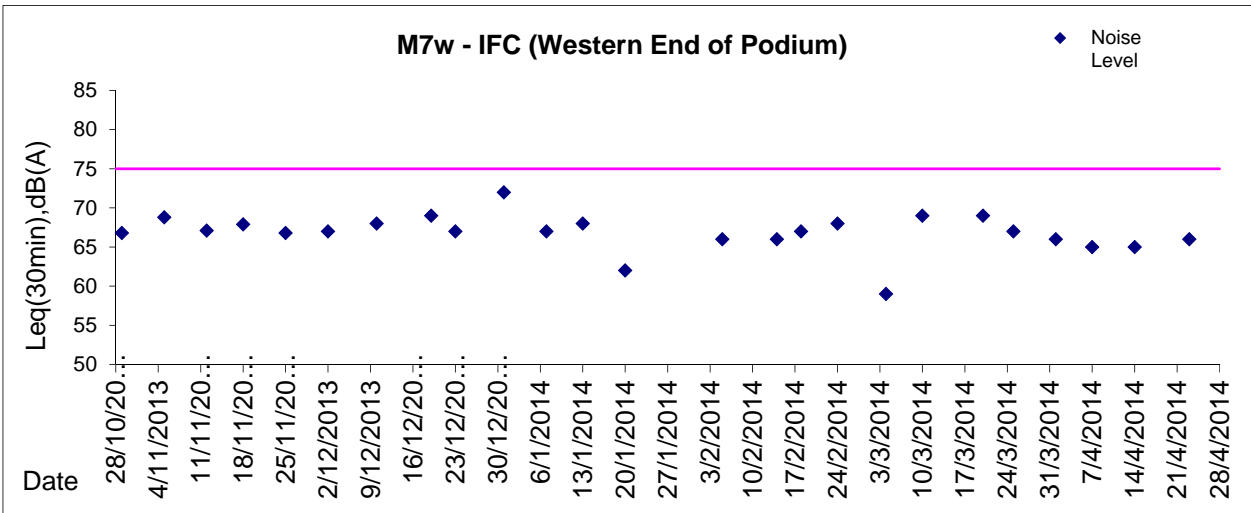
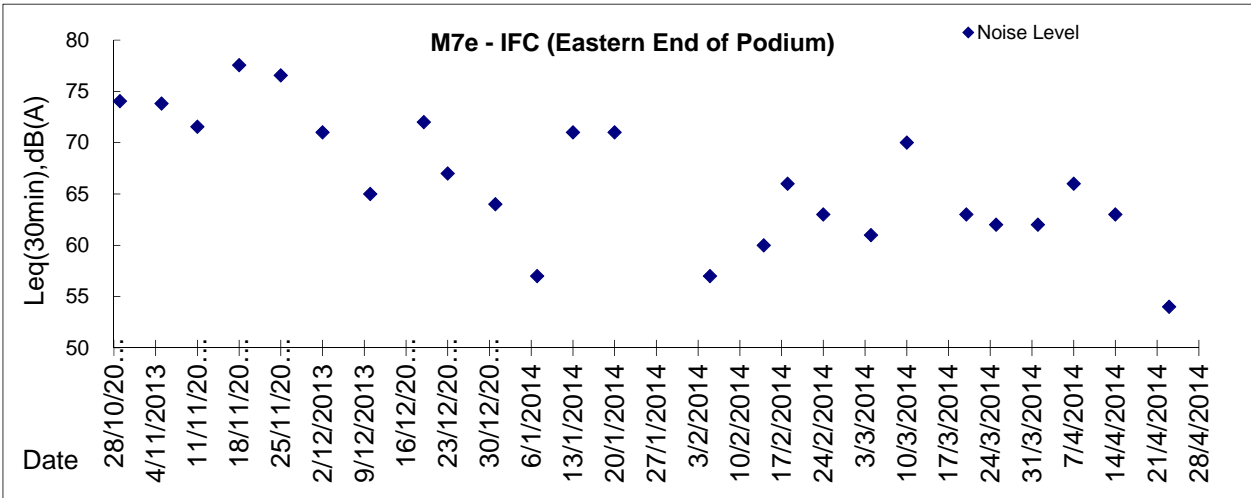
Graphic Presentation of Noise Monitoring Result
Day Time (0700 - 1900hrs on normal weekdays)





Graphic Presentation of Noise Monitoring Result

Day Time (0700 - 1900hrs on normal weekdays)



* Remark: M7e - IFC (Eastern End of Podium) is a reference monitoring station